



THE
SPRAY NOZZLE
PEOPLE

NFD

Dovetail Flat Fan



FLAT FAN

DESIGN FEATURES

- ✓ Dovetail joint guarantees alignment of interchangeable tips
- ✓ Dimensionally compatible with other dovetail systems
- ✓ Tips offset 5° or 15° for overlapping spray patterns
- ✓ Tapered overlapping spray provides uniform coverage
- ✓ Male, female and welded connections
- ✓ Other sizes available upon request

SPRAY CHARACTERISTICS

- ✓ Spray pattern: Flat Fan
- ✓ Spray angles: 20°, 30°, 45°, 60°, 90°, and 120°. Special angles are available on request
- ✓ Flow rates: 0.159 to 358 l/min



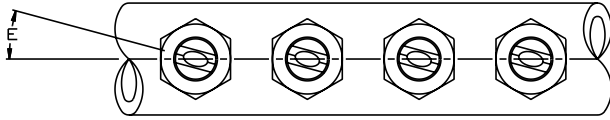
The NFD is a flat fan nozzle that consists of a base, a dovetail nozzle tip and a retaining cap. The dovetail design ensures that the spray tip aligns at a precise offset angle. The off-set angle is in place to ensure that individual spray patterns do not interfere with each other when they overlap in a typical spraybar setup. The NFD nozzle can be used in any spray application where a standard flat fan nozzle would be used for example:

Spray bars
Coating
Moistening
Cleaning
And more.

CALL NOW : +44 (0) 1273 400092

www.spray-nozzle.co.uk

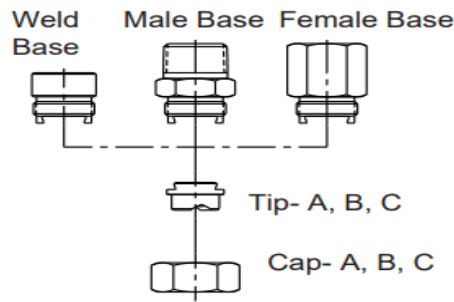
The Go-to People for spray nozzle solutions



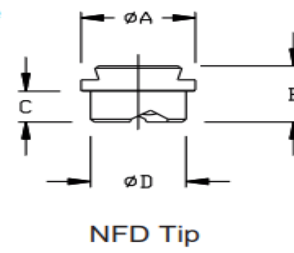
Offset angle -E



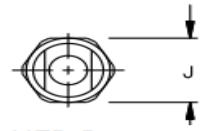
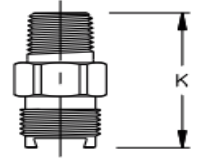
Fan 50°



NFD Components



NFD Tip



NFD Base

NFD Flow Rates

Fan, 20°, 30°, 45°, 60°, 90°, 120° Spray Angles, 1/4", 3/8", 1/2", 3/4" and 1-1/4" Pipe Size, BSP or NPT or Welded Connections
Standard materials: Brass, 303 and 316 Stainless Steel

Cap and Tip Size	Nozzle Number	Base Sizes Available	K	Litres per minute @ BAR							Orif Dia. mm	Dimensions (mm)					Wt (g)		
				0.5 BAR	1 BAR	2 BAR	3 BAR	5 BAR	7 BAR	10 BAR		A	B	C	D	E			
A	NFD010	1/4, 3/8, 1/2	0.23	0.16	0.225	0.318	0.39	0.503	0.596	0.712	0.7				12				
	NFD014	1/4, 3/8, 1/2	0.32	0.23	0.318	0.449	0.55	0.71	0.84	1	0.9								
	NFD019	1/4, 3/8, 1/2	0.45	0.31	0.445	0.629	0.77	0.994	1.18	1.41	1	14.8							
	NFD031	1/4, 3/8, 1/2	0.70	0.50	0.704	0.996	1.22	1.58	1.86	2.23	1.2								
	NFD039	1/4, 3/8, 1/2	0.88	0.63	0.883	1.25	1.53	1.98	2.34	2.79	1.35		12						
	NFD050	1/4, 3/8, 1/2	1.13	0.80	1.13	1.6	1.96	2.53	2.99	3.58	1.5					5°	42		
	NFD059	1/4, 3/8, 1/2	1.34	0.95	1.34	1.89	2.32	3	3.54	4.24	1.65		7						
	NFD077	1/4, 3/8, 1/2	1.77	1.25	1.77	2.5	3.06	3.95	4.67	5.59	2								
	NFD097	1/4, 3/8, 1/2	2.22	1.57	2.22	3.14	3.85	4.97	5.88	7.03	2.2				12				
	NFD12	1/4, 3/8, 1/2	2.82	2.00	2.82	3.99	4.89	6.31	7.47	8.93	2.5								
B	NFD15	1/4, 3/8, 1/2	3.35	2.37	3.35	4.74	5.81	7.5	8.87	10.6	2.7								
	NFD20	3/4	4.45	3.15	4.45	6.3	7.71	10	11.8	14.1	3								
	NFD25	3/4	5.65	4.00	5.65	7.99	9.79	12.6	15	17.9	3.5								
	NFD31	3/4	7.04	4.98	7.04	9.96	12.2	15.8	18.6	22.3	4	24							
	NFD39	3/4	8.83	6.25	8.83	12.5	15.3	19.8	23.4	27.9	4.5								
	NFD50	3/4	11.30	8.00	11.3	16	19.6	25.3	29.9	35.8	5								
	NFD62	3/4	14.10	10.00	14.1	20	24.5	31.6	37.4	44.7	5.5		15					15°	168
	NFD77	3/4	17.70	12.50	17.7	25	30.6	39.5	46.7	55.9	6								
	NFD87	3/4	19.80	14.00	19.8	28	34.3	44.3	52.4	62.6	6.4			9					
	NFD104	3/4	23.70	16.70	23.7	33.5	41	52.9	62.6	74.9	7.2								
C	NFD124	3/4	28.30	20.00	28.3	40	49	63.3	74.8	89.5	8								
	NFD155	3/4	35.30	25.00	35.3	50	61.2	79	93.5	112	9				20				
	NFD195	3/4	44.50	31.40	44.5	62.9	77	99.4	118	141	10								
	NFD124	1-1/4	28.30	20.00	28.3	40	49	63.2	74.8	89.5	8								
	NFD195	1-1/4	44.50	31.40	44.5	62.9	77	99.4	118	141	10	38.5	22	13.5	32	15°	224		
	NFD309	1-1/4	70.40	49.80	70.4	100	122	158	186	223	12								
NFD496	1-1/4	113.0	80.00	113	160	196	253	299	358	15									

Dimensions

BSP or NPT Pipe	Approx Base Dim (mm) J	Approx Base Dim (mm) K
1/4"	17.5	36.5
3/8"	17.5	36.5
1/2"	22	44.5
3/4"	28.5	51
1-1/4"	44.5	63.5

Flow Rate (l/min) = K $\sqrt{\text{bar}}$