



THE
SPRAY NOZZLE
PEOPLE

NC

Threaded Connection
Plastic Material



FULL CONE

DESIGN FEATURES

- ▼ Complete line of full cone nozzles made of plastic and some bar stock metal alloy materials
- ▼ Uniform coverage
- ▼ Male and female connections
- ▼ Flanged connection available in larger models
- ▼ For metal alloy nozzles, refer to MaxiPass

SPRAY CHARACTERISTICS

- ▼ High flow rates with coarse atomisation
- ▼ Spray pattern: Full Cone. For square patterns, please contact SNP
- ▼ Spray angles: 60°, 90°, and 120° standard
- ▼ Flow rates: 7.50 to 8180 l/min
Higher flow rates available



The NC nozzle is a high flow rate full cone nozzle with coarse atomisation. It has an all-plastic design for maximum chemical compatibility. With a wide range of sizes and spray angles the NC is used in applications such as:

Absorber Sprays
Deluge Cooling
Packed Bed Fluid Distribution
Gas Scrubbing
Mist Eliminator Washing
Parts Washing
And many more.

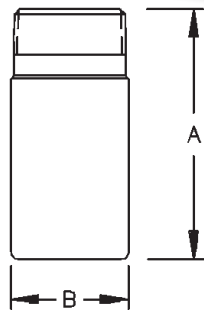
CALL NOW : +44 (0) 1273 400092

www.spray-nozzle.co.uk

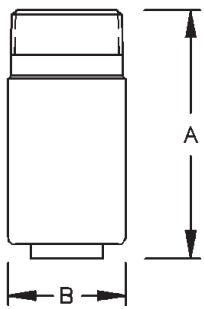
The Go-to People for spray nozzle solutions



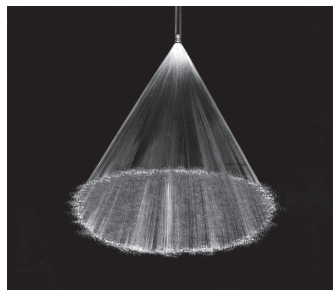
Male 120°



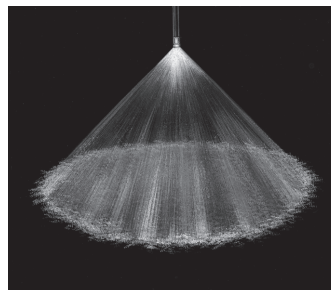
Male 60°/90°



Male 60°/90°



Full cone 60°(FCN)



Full cone 90°(FCN)



Full cone 120°(FCN)

NC Flow Rates and Dimensions

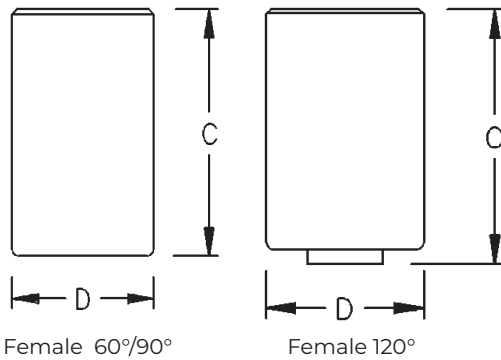
Full Cone, Narrow 60°(N), Medium 90°(M) and Wide 120°(W) Spray Angles, 3/4" to 6" Pipe Sizes, BSP or NPT
Standard materials: PVC, Polypropylene and PTFE

Male or female pipe size	Nozzle No.	K	Litres per minute @ BAR								Orifice Dia (mm)	Free Pass (mm)	Dimensions (mm)				Wt Male PVC (g)	
			0.2 BAR	0.5 BAR	0.7 BAR	1 BAR	2 BAR	3 BAR	5 BAR	7 BAR			A	B	C	D		
3/4"	NC0703	16	7.5	11.5	13.5	16	22.1	26.8	34.1	39.9	6.35	4.06						
	NC0704	21.3	10	15.4	18	21.3	29.5	35.7	45.4	53.2	6.35	4.83	44.5	28.4	53.8	38.1	28	
	NC0707	37.3	17.5	26.9	31.6	37.3	51.7	62.5	79.5	93.1	8.38	5.84						
1"	NC1009	48	22.5	34.6	40.6	48	66.4	80.4	102	120	9.65	6.35	55.6	34.9	63.5	44.5	35	
	NC1012	64	30	46.2	54.1	64	88.6	107	136	160	11.4	7.62						
1 1/4"	NC1214	74.6	35	53.9	63.1	74.6	103	125	159	186	11.9	8.64	82.6	44.5	82.6	50.8	106	
	NC1217	90.6	42.5	65.4	76.6	90.6	126	152	193	226	13.5	9.65						
1 1/2"	NC1516	85.3	40	61.6	72.1	85.3	118	143	182	213	12.7	9.65						
	NC1520	107	50	77	90.1	107	148	179	227	266	14.2	10.4	108	50.8	108	63.5	191	
	NC1524	128	60	92.4	108	128	177	214	273	319	15.5	11.2						
2"	NC2017	90.6	42.5	65.4	76.6	91	126	152	193	226	13.5	9.65						
	NC2020	107	50	77	90.1	107	148	179	227	266	14.2	10.4						
	NC2033	176	82.6	127	149	176	244	295	375	439	18.3	14	148	63.5	148	76.2	361	
	NC2040	213	100	154	180	213	295	357	454	532	20.3	16						
	NC2045	240	113	173	203	240	332	402	511	599	21.3	16						

Flow Rate (l/min) = K (bar)^{0.47}



Female 120°



NC Flow Rates and Dimensions

Full Cone, Narrow 60°(N), Medium 90°(M) and Wide 120°(W) Spray Angles, 3/4" to 6" Pipe Sizes, BSP
Standard materials: PVC, Polypropylene and PTFE

Male or female pipe size	Noz- zle No.	K	Litres per minute @ BAR							Orifice Dia (mm)	Free Pass (mm)	Dimensions (mm)				Wt Male PVC (g)	
			0.2 BAR	0.5 BAR	0.7 BAR	1 BAR	2 BAR	3 BAR	5 BAR			7 BAR	A	B	C		D
2"	NC2050	266	125	192	225	266	369	447	568	665	22.6	15.2	148	63.5	148	76.2	361
	NC2060	320	150	231	270	320	443	536	681	798	23.9	16.0					
	NC2065	346	163	250	293	346	480	581	738	865	25.4	17.0					
	NC2070	373	175	269	316	373	517	625	795	931	26.7	17.3					
2½"	NC2570	373	175	269	316	373	517	625	795	931	26.7	17.3	149	76.2	148	88.9	546
	NC2580	426	200	308	361	426	591	715	909	1060	28.7	17.5					
	NC2590	480	225	346	406	480	664	804	1020	1200	30.2	19.8					
3"	NC3058	309	145	223	261	309	428	518	659	772	24.1	16.0	149	88.9	148	102	645
	NC3084	448	210	323	379	448	620	750	954	1120	29.7	22.4					
	NC3096	512	240	369	433	512	709	858	1090	1280	28.4	24.1					
	NC30117	624	293	450	527	624	864	1050	1330	1560	34.5	24.6					
4"	NC40125	666	313	481	563	666	923	1120	1420	1660	35.3	24.9	149	114	184	127	1320
	NC40130	693	325	500	586	693	960	1160	1480	1730	35.3	24.9					
	NC40180	959	450	693	811	959	1330	1610	2040	2390	42.9	33.3					
	NC40250	1330	113	962	1130	1330	1850	2230	2840	3330	50.3	40.1					
6"	NC60350	1860	876	1350	1580	1860	2580	3130	3980	4660	60.5	43.2	241	168	279	178	3680
	NC60480	2560	1200	1850	2160	2560	3540	4290	5450	6390	69.9	44.5					
	NC60615	3280	1540	2370	2770	3280	4540	5490	6980	8180	79.0	50.0					

Flow Rate (l/min) = K (bar)^{0.47}